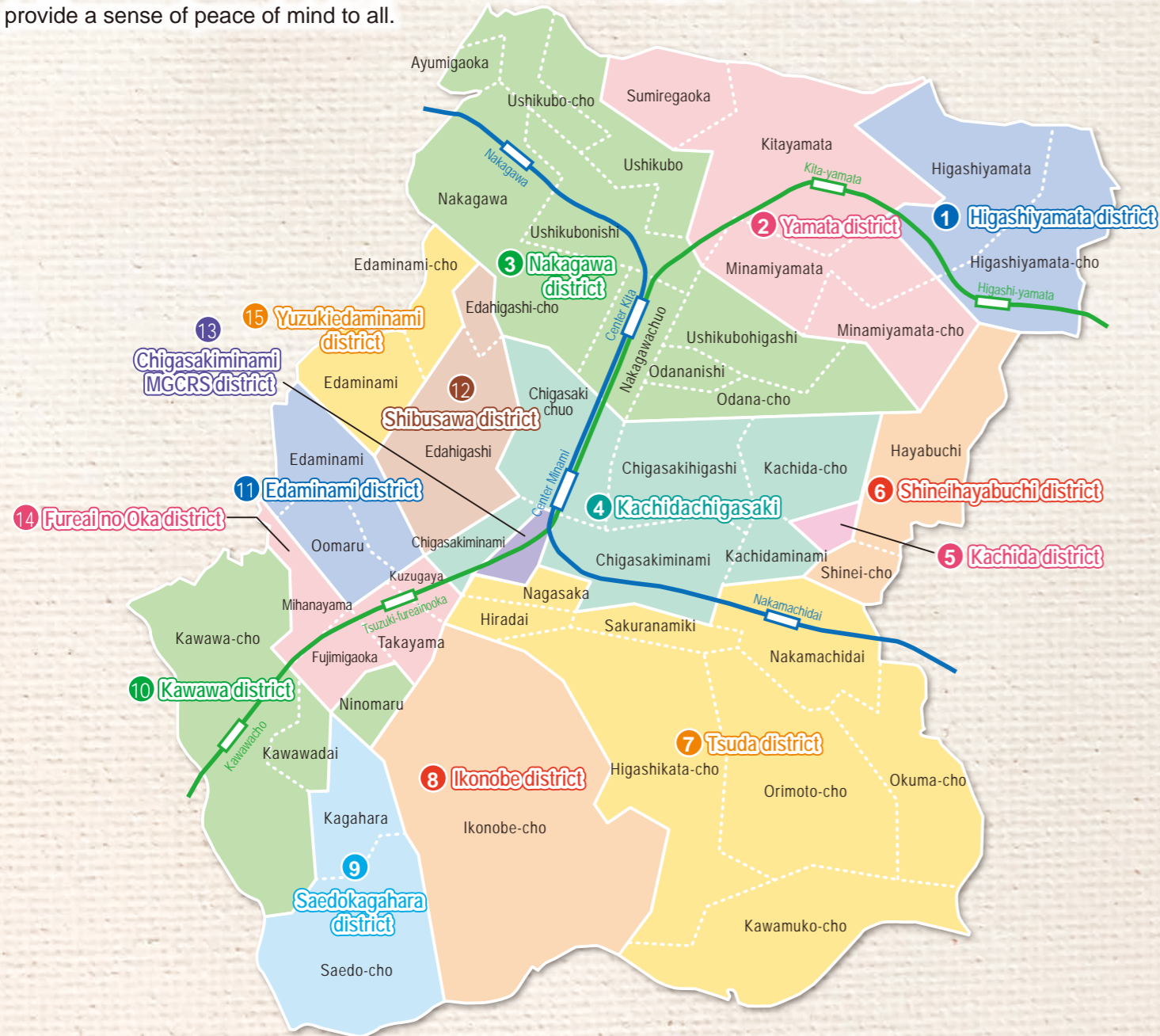


## District social welfare councils operating within Tsuzuki-ku

There are 15 district social welfare councils (hereafter, district social welfare councils) operating within Tsuzuki-ku. District social welfare councils are voluntary organizations formed by local community members seeking to “better their own communities themselves”. These councils consist of a broad range of community members, including neighborhood and resident associations, welfare commissioners and child social workers and volunteers. Each district promotes social welfare and health activities across the community, providing salons and other community spaces for children and the elderly, and conducting home-visiting programs for elderly as part of a broader effort to provide a sense of peace of mind to all.



## Yokohama City Tsuzuki-ku Council of Social Welfare



Tsuzuki-ku Council of Social Welfare mascot character "Yui-pi"



**Social Welfare Corporation  
Yokohama City Tsuzuki-ku Council of Social Welfare**

4-10-3 Edahigashi, Tsuzuki-ku, Yokohama-shi 224-0006  
 Inside Kohoku New Town Machizukurikan  
 TEL: 045-943-4058 FAX: 045-943-1863  
 MAIL: info@tuzuki-shakyo.jp  
 URL: <http://www.tuzuki-shakyo.jp>  
 X (formerly Twitter): @tuzukikushakyo

**<Access>**

- 8 minute walk from exit (1) of the Center-Minami Station on the Yokohama Municipal Subway
- 5 minute walk from Tsuzukiku sogo chosya (Tsuzuki Ward General Government Office Building) bus stop



Guided by our mission to help create a community together where everyone can live with peace of mind and be true to themselves in the place they call home, we work together with residents, volunteers, nonprofit organizations, and social welfare facilities to advance a broad range of welfare and public health activities across the community. Our work is shaped by two defining qualities, the autonomy of a private organization, and the public role we strive to uphold with the broad-sweeping support of local residents and those involved in social welfare.



## 01 Volunteer Center Operations

The Volunteer Center actively works to address and resolve the many inquiries it receives as community issues.

### ● Volunteer Center activities

- Coordinating requests for volunteers with those looking to engage in volunteer activities
- Distributing information on volunteer activities
- Handling volunteer insurance applications

### ● Welfare education and awareness-building

- Coordinating educational sessions on welfare issues with schools, communities, and private businesses, among others
- Loaning out welfare equipment (equipment for simulating the experience of elderly residents and white canes, etc.)

### ● Disaster Volunteer Center activities

In the event of a major disaster, the ward will coordinate with the Council of Social Welfare to establish a Disaster Volunteer Center if it is deemed necessary.

- Disaster Volunteer Center preparedness and organization
- Coordinating with Saigai (disaster) Volunteer Networks



## 02 Receiving and Distributing Donations

The Council of Social Welfare collects donations and membership fees to support its work, which are redistributed to local social welfare organizations.

### ● Goodwill bank

Distributing goodwill donations to individuals and organizations in need

### ● Supporting members

Membership fees drawn from organizations and individuals who support the activities and operations of the Council and district social welfare councils are used for social welfare activities in the district

## 03 Promotion of "Tsuzuki Ai", the Tsuzuki-ku Community Welfare and Health Plan

We work with care plazas found within the ward and the local area in promoting a uniform vision for a community that fosters new connections, promotes mutual support, and where the collective strength of the community is shared by all.



## 04 Enrichment of Mutual Support Activities within the Community

We are strengthening local connection and mutual support activities to help connect residents in need with the right public services and community groups to support them.

### ● Support for local health and welfare activities

We empower district social welfare councils and local groups through information sharing, activity grants, and by organizing training workshops.

### ● Life support system development programs

We create a supportive community for seniors valuing their individual abilities while ensuring they have the support they need to live independently, in addition to providing a range of opportunities for preventive care and social participation.

### ● Leveraging support funding to aid organizations involved with health and social welfare activities

- Tsuzuki-ku fureai support fund
- Year-end charity fund distribution
- Goodwill bank distribution



## 05 Promotion of Rights Advocacy Programs

We work to protect the rights and assets of elderly residents and persons with disabilities who face difficulties managing their finances or important documents, ensuring they can continue living with peace of mind in the neighborhood they know.

### ● Peace-of-mind Center operations (rights advocacy programs)

- Assistance with using welfare services, regular welfare checks, and financial management services
- Secure storage of bank books and other asset-related documents
- Guidance on adult guardianship system

## 06 Management and Operation of "Kakehashi Tsuzuki"

As the designated management entity, we oversee the operation of "Kakehashi Tsuzuki", a hub for health and welfare activities in Tsuzuki-ku, Yokohama, which serves as a dedicated activity space for local health and welfare organizations and volunteer groups, among others.



For more details on the services provided, please visit the Tsuzuki-ku Council of Social Welfare website.

URL: <https://tsuzuki-shakyo.jp/about/>



## 07 Response to Consultations

We handle consultations from those in need of a wide range of support, and provide the services required. Additionally, we are involved in awareness-raising activities focused on promoting understanding among residents.

### ● Livelihood welfare fund loan programs

We provide low-interest loans aimed at helping low income households and households with persons with disabilities and elderly households achieve independence

### ● Mobile information center services

Contact point for those in need of mobility support due to disability

- Coordinating guide volunteers
- Guidance on support programs
- Introduction to service providers, etc.



### ● Support programs for persons or children with disabilities

Awareness raising activities in partnership with support groups for persons or children with disabilities (Welfare education, Week for Persons with Disabilities campaigns)

### ● Support programs for persons experiencing financial hardship

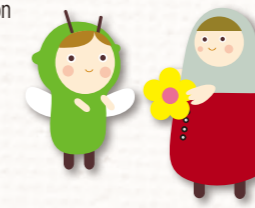
Aid provided to persons experiencing financial hardship and children's cafeterias (community hubs for children) using the food and daily commodities provided by companies and individuals within the ward



## 08 Secretariat for Welfare Groups

We act as the secretariat for welfare groups within the ward.

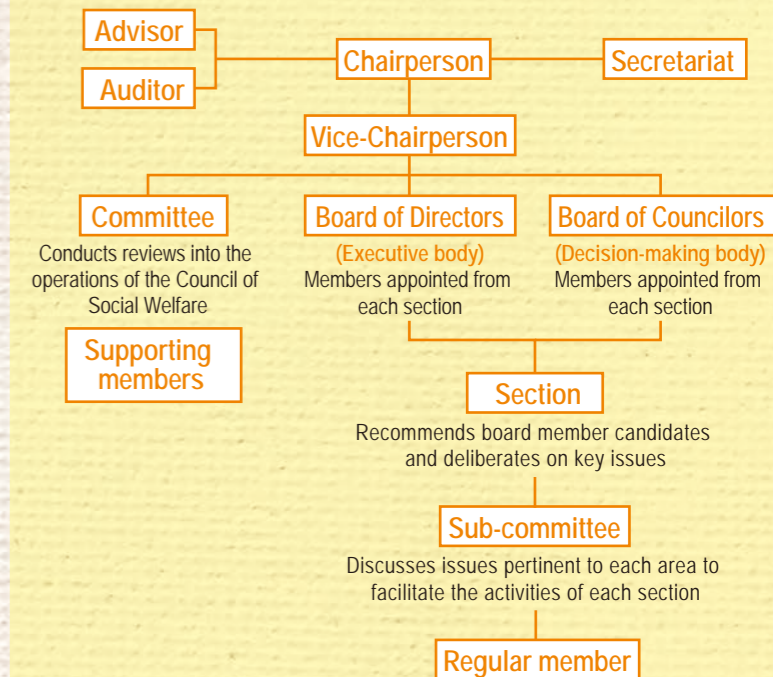
- Kanagawa Community Chest, Yokohama City Tsuzuki-ku Branch
- Japanese Red Cross Society, Kanagawa Branch, Yokohama City Chapter Headquarters, Tsuzuki-ku Committee
- Tsuzuki-ku Rehabilitation Aid Association
- Tsuzuki Volunteer Probation Officers Association
- Tsuzuki-ku Women's Association for Rehabilitation Aid
- Tsuzuki-ku War-Bereaved Families Association



## Organization

The Council of Social Welfare is a member-based organization. The Council's activities involve a broad range of local residents, including public and private social welfare facilities and organizations, local welfare commissioners and child social workers, district social welfare councils, neighborhood and resident associations, organizations of persons with disabilities and other self-help organizations, volunteer and civic organizations, other organizations involved in social welfare activities, relevant administrative agencies, and academic experts.

Moreover, directors, auditors, and councilors are elected from its members, and are directly involved in its operation.



## Sources of financing

Funding for the Council of Social Welfare consists of membership fees from regular members, contributions from supporting members who are aligned with our objectives, subsidies and commissioned funding from Yokohama City and the Yokohama and Kanagawa Social Welfare Councils, allocations from the Red Feather Community Chest and year-end charity drives, as well as other donations.

For more details on the above, please visit the Tsuzuki-ku Council of Social Welfare website.

URL: <https://tsuzuki-shakyo.jp/reference/>

